

A Million Random Digits
for flute and clarinet in Bb

Alexander Kolassa

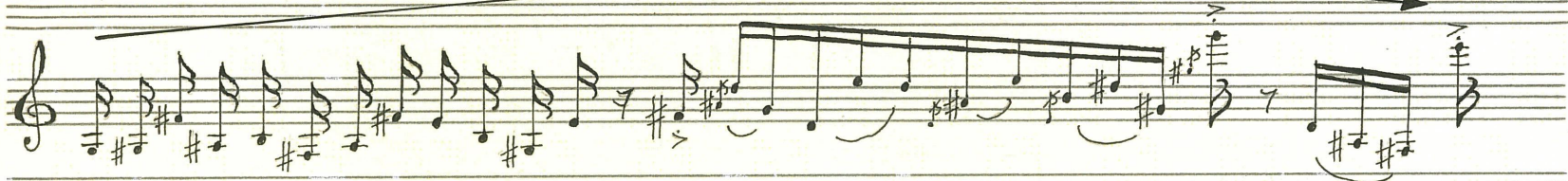
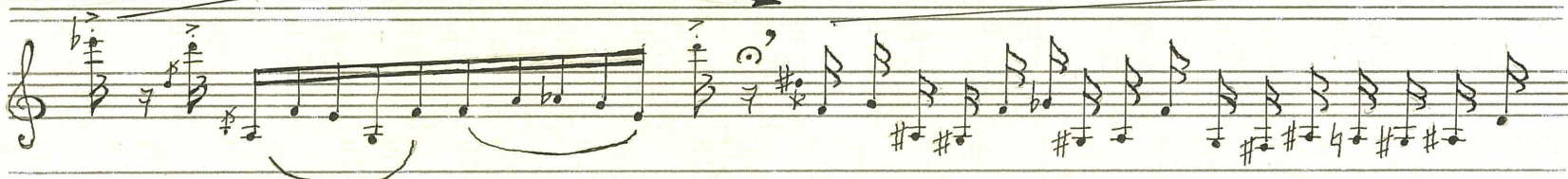
(2012/14)

In the two solo sections that are unmetered, accidentals are only active on the note that they precede; any subsequent notes are always natural. For metered passages the standard procedure applies (the bar-line resets any accidentals). Dynamics have been omitted from the clarinet solo. A dynamic contour that is as dramatic (or indeed non-dramatic) as the individual performer chooses, and is analogous to the parallel tempo contour, would be preferred by the composer.

a Million Random Digits

Alexander Kolarova

I

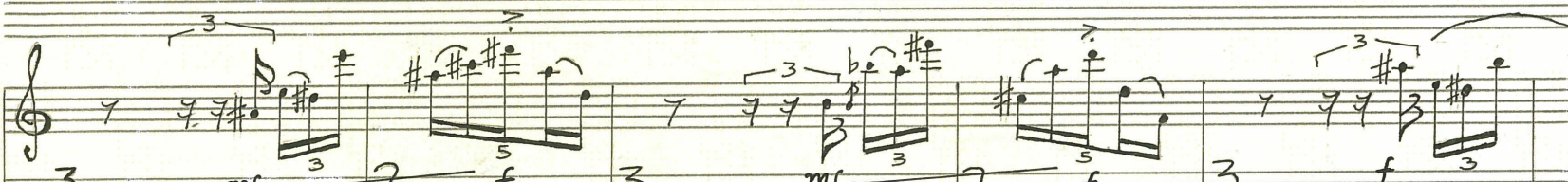
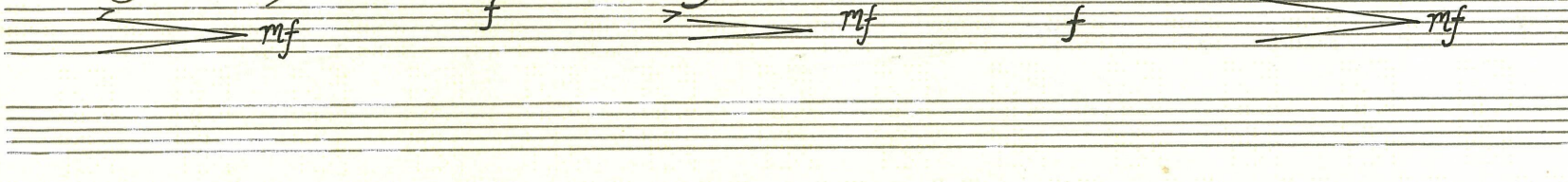
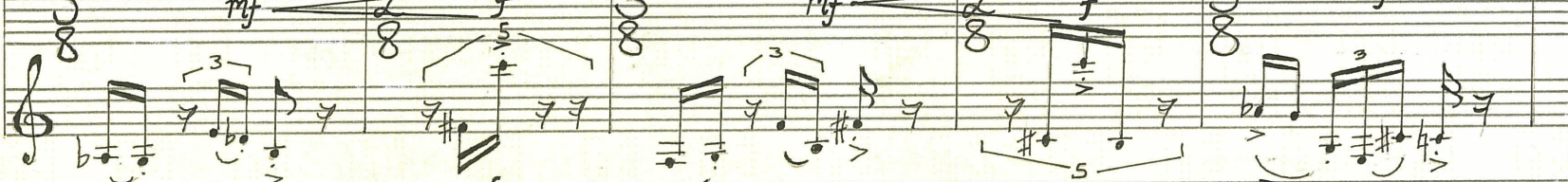
Clarinet
in Bb

molto cresc.

ff

(c. $\text{♩} = 76$)

flute

Clarinet
in Bb

Two staves of music. The top staff has a treble clef and a key signature of three sharps (F#, C#, G#). It contains several measures with eighth and sixteenth notes, some beamed together. Dynamic markings include *mf*, *f*, and *p*. The bottom staff also has a treble clef and the same key signature, with similar rhythmic patterns and dynamic markings like *f* and *mf*. There are slurs and fingerings indicated throughout.

Cl.

A single staff for Clarinet (Cl.) in treble clef with a key signature of three sharps. The music consists of a continuous line of eighth and sixteenth notes. A long slur covers the entire passage, with a crescendo hairpin at the bottom. The dynamic marking *f* appears at the end. The instruction *molto cresc.* is written below the staff.

poco(!) più mosso

II
fl.

Two staves of music. The top staff is for Flute (fl.) and the bottom for Clarinet (Cl.). Both are in treble clef with a key signature of three sharps. The Flute part has dynamic markings *f*, *mp*, and *f*. The Clarinet part has *mp*, *f*, and *mp*. There are slurs and fingerings throughout.

Two staves of music. The top staff has a treble clef and a key signature of three sharps. It features eighth and sixteenth notes with slurs. The bottom staff also has a treble clef and the same key signature, with similar rhythmic patterns and slurs.

Two staves of music. The top staff has a treble clef and a key signature of three sharps. It contains eighth and sixteenth notes with slurs. The bottom staff also has a treble clef and the same key signature, with similar rhythmic patterns and slurs. Dynamic markings like *mp* and *f* are present.

fl.

cl.

Handwritten musical score for Flute (fl.) and Clarinet (cl.) parts, page 3. The score consists of 12 systems of staves. The Flute part is on the top staff of each system, and the Clarinet part is on the bottom staff. The music is in 3/8 time and features various dynamic markings (p, mf, f, mp, pp) and articulations (accents, slurs, trills). The key signature has one sharp (F#).

fl.

Cl.

mp mf mp

mp mf mp

p mp p

p mf p

III

flute

f p mp f

Handwritten musical score for two staves, fl. (flute) and cl. (clarinet). The score is written in treble clef and includes various musical notations such as notes, rests, dynamics, and articulation.

The first system (measures 1-4) features a melodic line in the flute with a triplet of eighth notes in measure 1, followed by a half note, a quarter note, and a half note. The clarinet part consists of a series of eighth notes. Dynamics include *mp*, *p*, *f*, and *p*. Articulation includes accents and slurs.

The second system (measures 5-8) continues the melodic line in the flute with a half note, a quarter note, and a half note. The clarinet part consists of a series of eighth notes. Dynamics include *p* and *mf*. Articulation includes accents and slurs.

The third system (measures 9-12) features a melodic line in the flute with a half note, a quarter note, and a half note. The clarinet part consists of a series of eighth notes. Dynamics include *p* and *f*. Articulation includes accents and slurs.

The fourth system (measures 13-16) features a melodic line in the flute with a half note, a quarter note, and a half note. The clarinet part consists of a series of eighth notes. Dynamics include *mf* and *mp*. Articulation includes accents and slurs.

The fifth system (measures 17-20) features a melodic line in the flute with a half note, a quarter note, and a half note. The clarinet part consists of a series of eighth notes. Dynamics include *p* and *mf*. Articulation includes accents and slurs.

The sixth system (measures 21-24) features a melodic line in the flute with a half note, a quarter note, and a half note. The clarinet part consists of a series of eighth notes. Dynamics include *f* and *ff*. Articulation includes accents and slurs.

The seventh system (measures 25-28) features a melodic line in the flute with a half note, a quarter note, and a half note. The clarinet part consists of a series of eighth notes. Dynamics include *ff*. Articulation includes accents and slurs.

The eighth system (measures 29-32) features a melodic line in the flute with a half note, a quarter note, and a half note. The clarinet part consists of a series of eighth notes. Dynamics include *ff*. Articulation includes accents and slurs.

The tempo marking is *(c. ♩ = 80)*.

II_a

fl.

cl.

Handwritten musical score for Flute (fl.) and Clarinet (Cl.). The score is written on ten staves, with the first two staves labeled "fl." and "Cl." respectively. The music is in treble clef and 7/8 time. The key signature is one sharp (F#).

The score includes various musical notations such as notes, rests, slurs, and dynamic markings. The dynamics range from *mp* (mezzo-piano) to *ff* (fortissimo). The score is divided into measures by vertical bar lines, with some measures containing repeat signs.

Key features of the score include:

- Flute (fl.) and Clarinet (Cl.) parts.
- Dynamic markings: *mp*, *mf*, *p*, *ff*.
- Rehearsal marks: 3, 4, 5, 8.
- Repeat signs and slurs.
- Handwritten notes and markings.